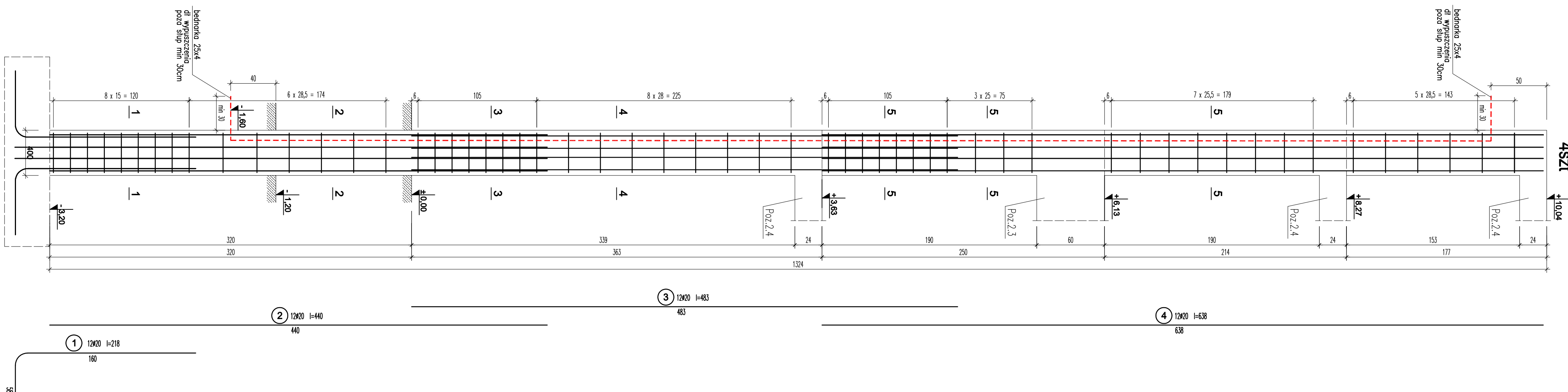
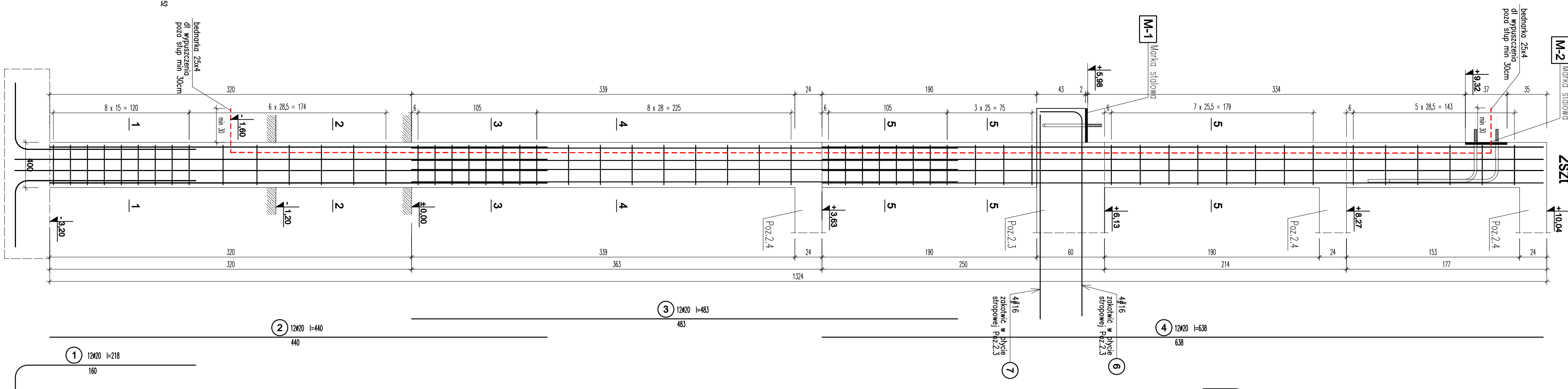


SLUP Poz.4.8

4Szt +10

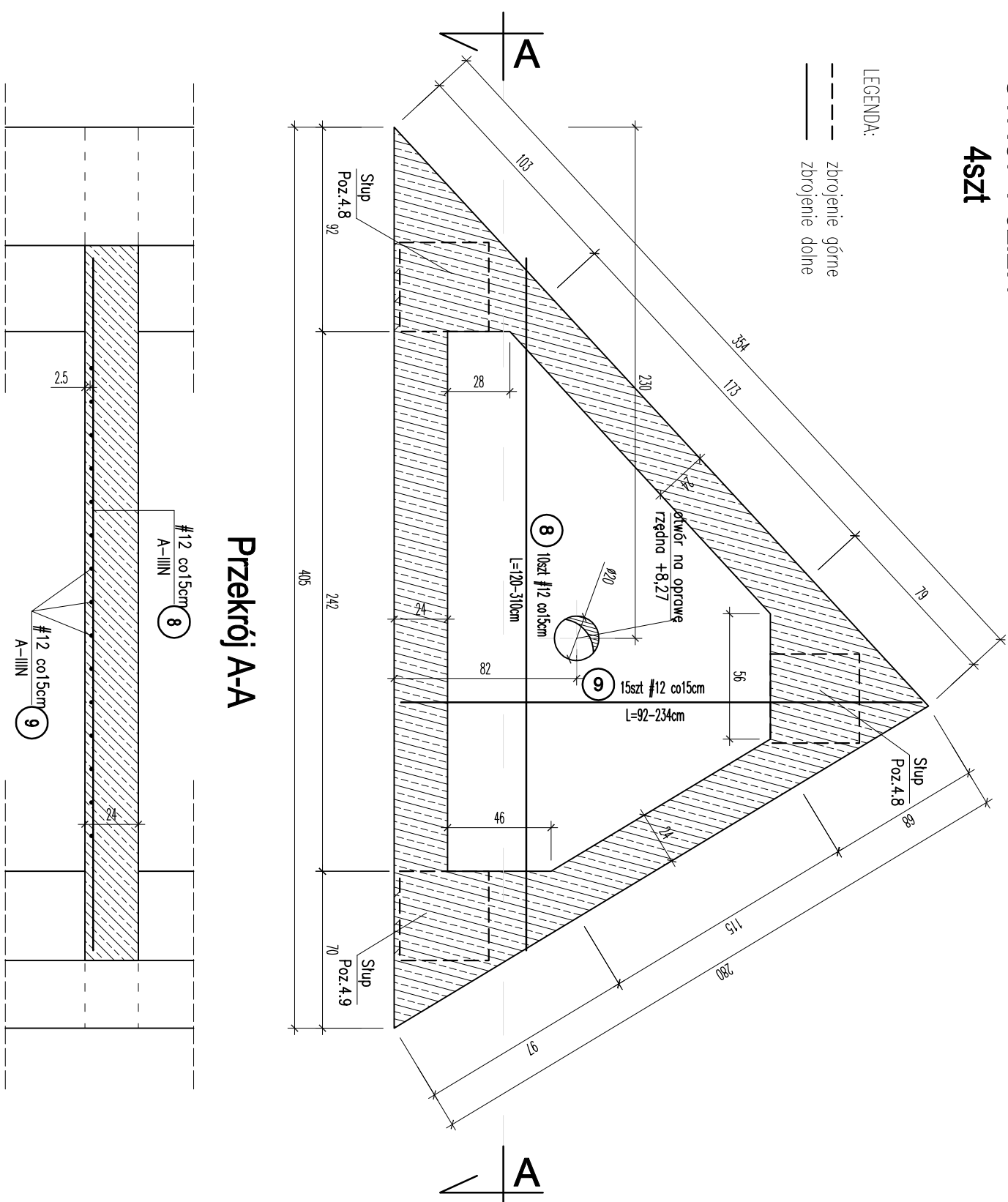


SLUP Poz.4.9

$$\frac{2s}{1}$$


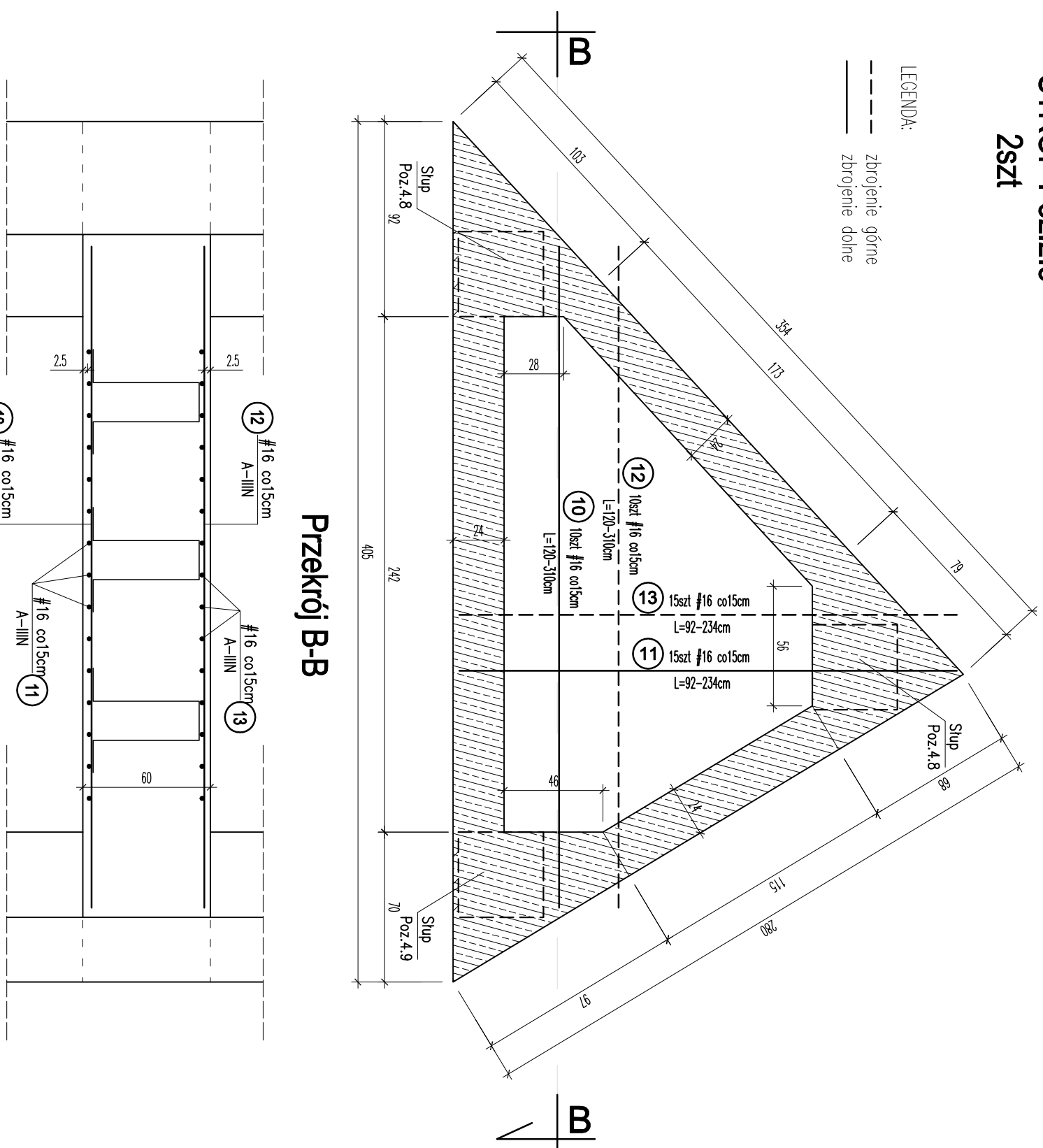
STROP Poz.2.4

4Szt



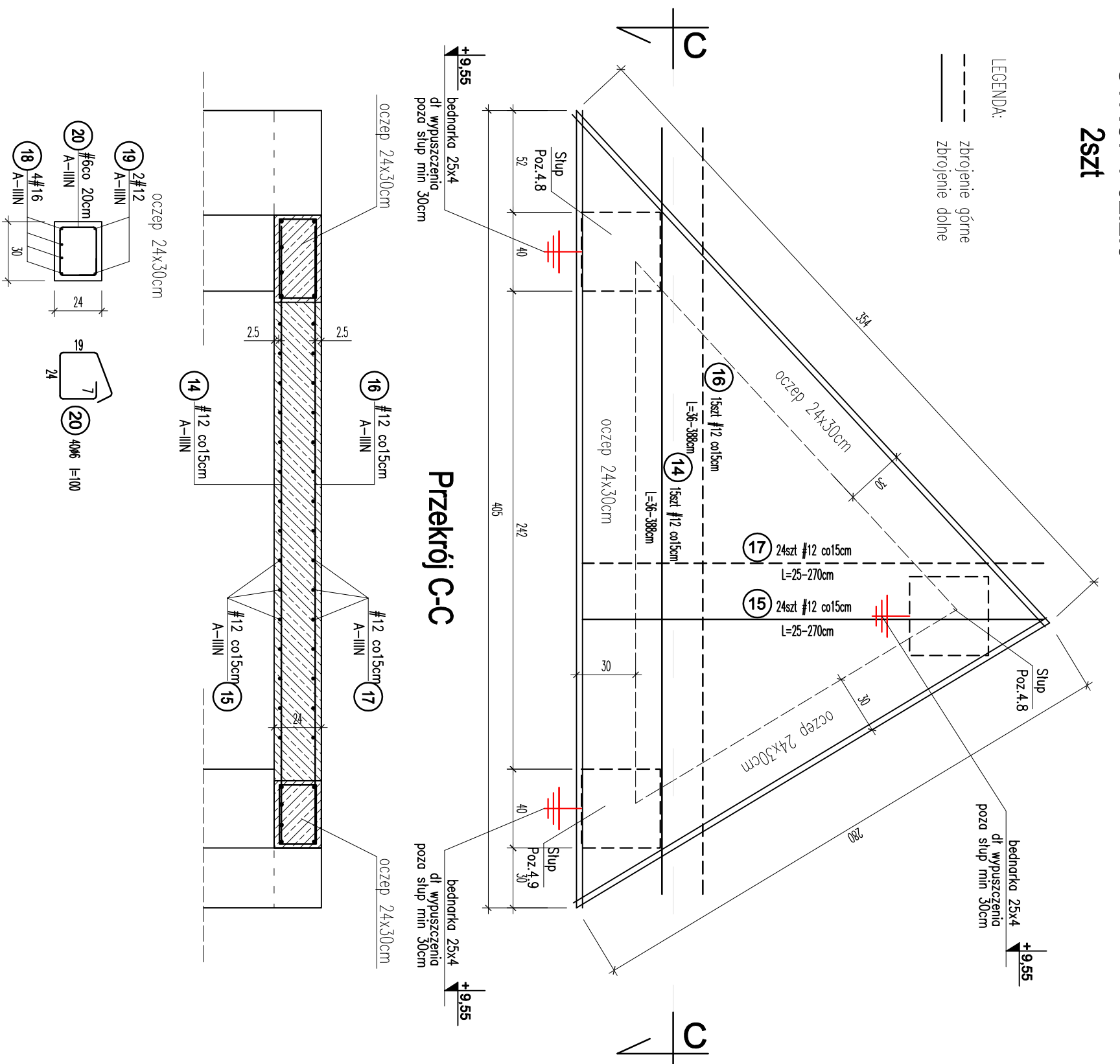
STROP Poz.2.3

25zt



STRÖP Poz.2.5

2st



ZESTAWIENIE STYL ZBROJOWIOW									
PŁYNO ZŁOTOWIE - STYL STRODY									
	Nr	KLASA STYL	PRĘDKOŚĆ PRĘDKA (m)	UDŁG	WZDŁ	WZDŁ	WZDŁ	WZDŁ	WZDŁ
1	1	95000	2,18	72		#6	#12	#16	#20
2	2	95000	4,40	72					316,90
3	3	95000	6,88	72					347,76
4	4	95000	9,36	72					378,62
5	5	95000	11,84	72	547,2				409,56
6	6	95000	14,32	80					440,42
7	7	95000	16,80	88					471,28
8	8	95000	19,28	96					502,14
9	9	95000	21,76	104					533,00
10	10	95000	24,24	112					563,86
11	11	95000	26,72	120	30,74				594,72
12	12	95000	29,20	128					625,58
13	13	95000	31,68	136					656,44
14	14	95000	34,16	144					687,30
15	15	95000	36,64	152					718,16
16	16	95000	39,12	160					749,02
17	17	95000	41,60	168					779,88
18	18	95000	44,08	176					810,74
19	19	95000	46,56	184					841,60
20	20	95000	49,04	192					872,46
21	21	95000	51,52	200					903,32
22	22	95000	54,00	208					934,18
23	23	95000	56,48	216					965,04
24	24	95000	58,96	224					995,90
25	25	95000	61,44	232					1026,76
26	26	95000	63,92	240					1057,62
27	27	95000	66,40	248					1088,48
28	28	95000	68,88	256					1119,34
29	29	95000	71,36	264					1150,20
30	30	95000	73,84	272					1181,06
31	31	95000	76,32	280					1211,92
32	32	95000	78,80	288					1242,78
33	33	95000	81,28	296					1273,64
34	34	95000	83,76	304					1304,50
35	35	95000	86,24	312					1335,36
36	36	95000	88,72	320					1366,22
37	37	95000	91,20	328					1397,08
38	38	95000	93,68	336					1427,94
39	39	95000	96,16	344					1458,80
40	40	95000	98,64	352					1489,66
41	41	95000	101,12	360					1520,52
42	42	95000	103,60	368					1551,38
43	43	95000	106,08	376					1582,24
44	44	95000	108,56	384					1613,10
45	45	95000	111,04	392					1643,96
46	46	95000	113,52	400					1674,82
47	47	95000	116,00	408					1705,68
48	48	95000	118,48	416					1736,54
49	49	95000	120,96	424					1767,40
50	50	95000	123,44	432					1798,26
51	51	95000	125,92	440					1829,12
52	52	95000	128,40	448					1860,00
53	53	95000	130,88	456					1890,86
54	54	95000	133,36	464					1921,72
55	55	95000	135,84	472					1952,58
56	56	95000	138,32	480					1983,44
57	57	95000	140,80	488					2014,30
58	58	95000	143,28	496					2045,16
59	59	95000	145,76	504					2076,02
60	60	95000	148,24	512					2106,88
61	61	95000	150,72	520					2137,74
62	62	95000	153,20	528					2168,60
63	63	95000	155,68	536					2199,46
64	64	95000	158,16	544					2230,32
65	65	95000	160,64	552					2261,18
66	66	95000	163,12	560					2292,04
67	67	95000	165,60	568					2322,90
68	68	95000	168,08	576					2353,76
69	69	95000	170,56	584					2384,62
70	70	95000	173,04	592					2415,48
71	71	95000	175,52	600					2446,34
72	72	95000	178,00	608					2477,20
73	73	95000	180,48	616					2508,06
74	74	95000	182,96	624					2538,92
75	75	95000	185,44	632					2569,78
76	76	95000	187,92	640					2600,64
77	77	95000	190,40	648					2631,50
78	78	95000	192,88	656					2662,36
79	79	95000	195,36	664					2693,22
80	80	95000	197,84	672					2724,08
81	81	95000	200,32	680					2754,94
82	82	95000	202,80	688					2785,80
83	83	95000	205,28	696					2816,66
84	84	95000	207,76	704					2847,52
85	85	95000	210,24	712					2878,38
86	86	95000	212,72	720					2909,24
87	87	95000	215,20	728					2940,10
88	88	95000	217,68	736					2970,96
89	89	95000	220,16	744					3001,82
90	90	95000	222,64	752					3032,68
91	91	95000	225,12	760					3063,54
92	92	95000	227,60	768					3094,40
93	93	95000	230,08	776					3125,26
94	94	95000	232,56	784					3156,12
95	95	95000	235,04	792					3186,98
96	96	95000	237,52	800					3217,84
97	97	95000	240,00	808					3248,70
98	98	95000	242,48	816					3279,56
99	99	95000	244,96	824					3310,42
100	100	95000	247,44	832					3341,28
101	101	95000	249,92	840					3372,14
102	102	95000	252,40	848					3403,00
103	103	95000	254,88	856					3433,86
104	104	95000	257,36	864					3464,72
105	105	95000	259,84	872					3495,58
106	106	95000	262,32	880					3526,44
107	107	95000	264,80	888					3557,30
108	108	95000	267,28	896					3588,16
109	109	95000	269,76	904					3619,02
110	110	95000	272,24	912					3649,88
111	111	95000	274,72	920					3680,74
112	112	95000	277,20	928					3711,60
113	113	95000	279,68	936					3742,46
114	114	95000	282,16	944					3773,32
115	115	95000	284,64	952					3804,18
116	116	95000	287,12	960					3835,04
117	117	95000	289,60	968					3865,90
118	118	95000	292,08	976					3896,76
119	119	95000	294,56	984					3927,62
120	120	95000	297,04	992					3958,48
121	121	95000	299,52	1000					3989,34
122	122	95000	302,00	1008					4020,20
123	123	95000	304,48	1016					4051,06
124	124	95000	306,96	1024					4081,92
125	125	95000	309,44	1032					4112,78
126	126	95000	311,92	1040					4143,64
127	127	95000	314,40	1048					4174,50
128	128	95000	316,88	1056					4205,36
129	129	95000	319,36	1064					4236,22
130	130	95000	321,84	1072					4267,08
131	131	95000	324,32	1080					4297,94
132	132	95000	326,80	1088					4328,80
133	133	95000	329,28	1096					4359,66
134	134	95000	331,76	1104					4390,52
135	135	95000	334,24	1112					4421,38
136	136	95000	336,72	1120					4452,24
137	137	95000	339,20	1128					4483,10
138	138	95000	341,68	1136					4513,96
139	139	95000	344,16	1144					4544,82
140	140	95000	346,64	1152					4575,68
141	141	95000	349,12	1160					4606,54
142	142	95000	351,60	1168					4637,40
143	143	95000	354,08	1176					4668,26
144	144	95000	356,56	1184					4699,12
145	145	95000	359,04	1192					4729,98
146	146	95000	361,52	1200					4760,84
147	147	95000	364,00	1208					4791,70
148	148	95000	366,48	1216					4822,56
149	149	95000	368,96	1224					4853,42
150	150	95000	371,44	1232					4884,28
151	151	95000	373,92	1240					4915,14
152	152	95000	376,40	1248					4946,00
153	153	95000	378,88	1256					4976,86
154	154	95000	381,36	1264					5007,72
155	155	95000	383,84	1272					5038,58
156	156	95000	386,32	1280					5069,44
157	157	95000	388,80	1288					5100,30
158	158	95000	391,28	1296					5131,16
159	159	95000	393,76	1304					5162,02
160	160	95000	396,24	1312					5192,88
161	161	95000	398,72	1320					5223,74
162	162	95000	401,20	1328					525

Zestawienie stali profilowanej						
Nr	ELEMENT	ilość	masa jedn.	długość	waga / szt.	masa
		[szt.]	[kg]	[m]	[kg]	
M1	MARRA-M-1 300x40x20	2	7850		18,64	37,058
M2	MARRA-M-2 300x70x20	2	7850		18,59	37,18
K1	KOJWA-K-1	2	3,35		1,240	4,40
K2	KOJWA-K-2	8	3,35		5,08	42,67
SUMA [kg]					1,439	724,27

[illegible]